

# The Wreck Of The Edmund Fitzgerald

Words and Music by  
GORDON LIGHTFOOT

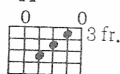
Moderately slow, in 1

\*Guitar→A sus2



Piano→C sus2

A11



C11

D sus4

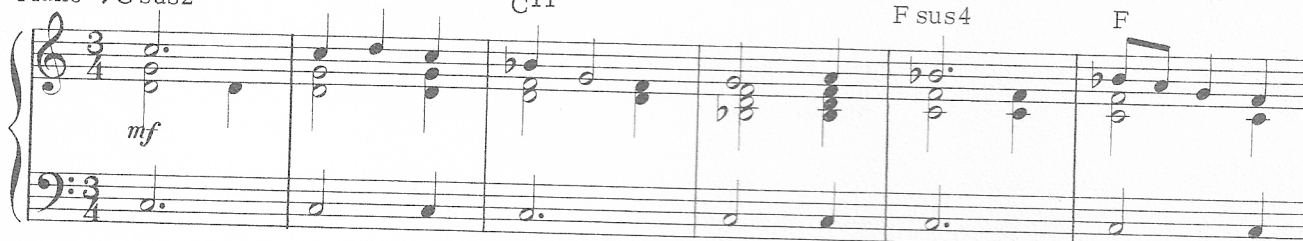


F sus4

D



F

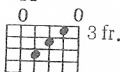


A sus2



C sus2

A11



C11

D



F



A sus2



C sus2

A sus2



C sus2



The leg-end lives on from the  
wind in the wires made a  
an - y - one know where the



Em



Gm



Bb

D

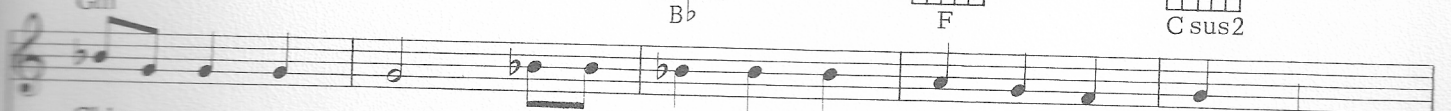


F

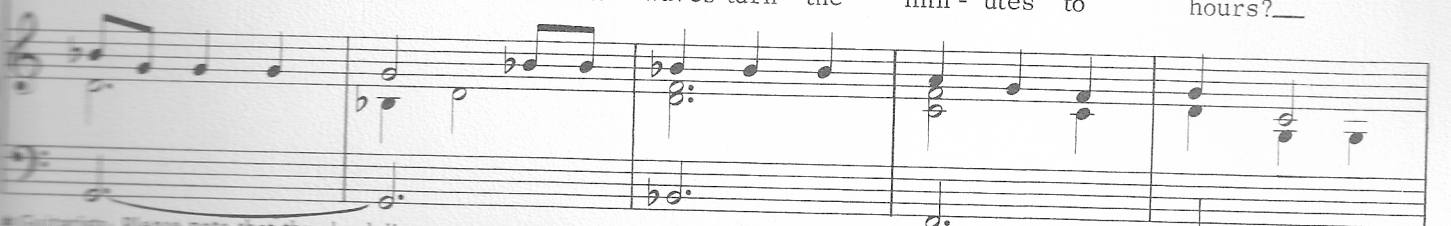
A sus2



C sus2



Chip-pe - wa on down of the big lake they called "Git - che Gu - mee."  
tat - tle - tale sound and a wave broke o - ver the rail - ing.  
love of God goes when the waves turn the min - utes to hours? -



\*Guitarists: Please note that the chord diagrams are in the key of A, but the piano accompaniment is in the key of C. In order for the guitar to sound in the same key as the piano, use a capo on the 3rd fret. You also may adjust the capo to play in any key that fits your own individual vocal range. Use flat pick strum.